

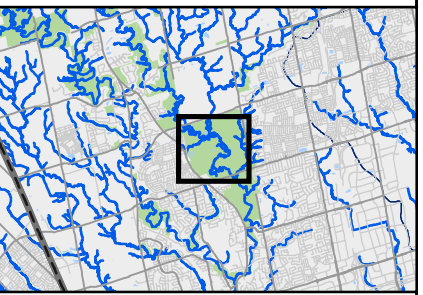
## Kortright Wetland and Stream Trail Closure and Signage

Major Mackenzie Dr. & Pine Valley Dr.  
(Humber River, York Region)

- Notes:**
- trail will be temporarily closed during site mobilization, demobilization, and material deliveries
  - 'Notice of Construction' signage will be posted 2 weeks prior to construction to give advanced warning to trail users
  - 'Trail Closure' signage will be posted while temporary closures are in place

- Legend**
- Notice of Construction Sign
  - Trail Closure Sign
  - Temporary Trail Closure
  - Humber Trail
  - Riparian
  - Planting Mound
  - Wetland - Deep Pocket
  - Wetland - Emergent Zone
  - Wetland - Tree and Shrub

Date: 2026-05-14  
Created by: Restoration and Infrastructure  
Orthophoto: MNRF, 2019



Source: Esri, Vantor, Earthstar Geographics, and the GIS User Community

Disclaimer: The data used to create this map was compiled from a variety of sources & dates. The TRCA takes no responsibility for errors or omissions in the data and retains the right to make changes & corrections at anytime without notice. For further information about the data on this map, please contact the TRCA Restoration and Infrastructure Division. (416) 661-6600. May not be reproduced without permission. This is not a plan of survey. Produced by Toronto and Region Conservation Authority under licence with the Ministry of Natural Resources & Forestry. © Queen's Printer for Ontario