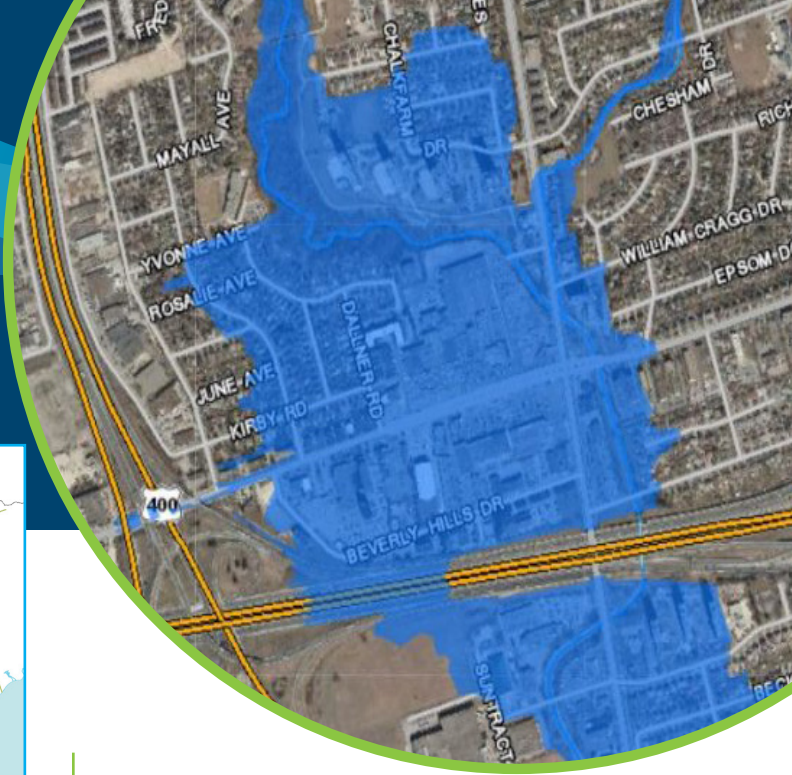




TORONTO

FLOOD AND EROSION INFRASTRUCTURE - PHYSICAL

Jane-Wilson Special Policy Area Flood Protection



OVERVIEW

The Jane–Wilson Special Policy Area is one of Toronto’s most flood vulnerable urban neighbourhoods. To protect this community, TRCA is launching a multi stage initiative: Feasibility Study, Environmental Assessment, preferred solution that will ultimately identify and prepare a long term, implementable flood protection strategy. External investment is essential to moving this high risk, high impact work forward.

OBJECTIVES

Jane–Wilson is one of Toronto’s most flood vulnerable areas. A multi stage planning process will identify a viable, community endorsed flood protection solution that reduces uncertainty and supports future capital investment. The objective is to develop a technically sound, environmentally responsible, and publicly supported plan that advances long term risk reduction.

BENEFITING STAKEHOLDERS

- City of Toronto
- Jane - Wilson and other local surrounding communities
- Province of Ontario

EXPECTED IMPACT

- Efficient and effective project implementation
- Safe communities, property and infrastructure
- Unlocked new economic opportunities

BUDGET & FUNDING

Estimated Total Cost (\$000's): \$5,070

Possible Funding Sources:

- Water and Erosion Control Infrastructure Grant
- Disaster Mitigation Action Plan Grant
- Municipal Contributions

OWNERSHIP

- TRCA, City of Toronto, Private Landowners




TORONTO

FLOOD AND EROSION INFRASTRUCTURE - PHYSICAL

KEY PRIORITIES AND ACTIVITIES TO DATE

Identify a viable, community supported flood protection solution.  High Priority

Advance the project to a point where it becomes eligible for capital funding and implementation.  High Priority

Reduce uncertainty for residents and improve long term planning outcomes.

Establish a clear path toward reducing future flood losses and emergency response impacts.

RISKS IF UNFUNDED

Social: Communities will continue to face flood vulnerability at a time of increasing weather-related pressures due to climate change.

Financial / Economic: increased risk exposure, hampered investment opportunities and economic development, the potential for significant financial losses for the City of Toronto.

Deferred Action Risk: Delaying planning will continue to worsen conditions, make future planning and execution more complex and costly.

OPPORTUNITIES FOR FUNDERS

Partner contributions will directly support:

- Safer, more resilient neighbourhoods in a vulnerable part of Toronto.
- Evidence based municipal planning and reduced long term risk exposure.
- Meaningful public engagement, ensuring equitable outcomes.
- Climate resilient community development supported by sound engineering and analysis.

Partners can help shape a transformative project that delivers measurable social and economic benefits.



KEY DATES

- **Possible Start:** 2026
- **Duration:** 5-10 Years

CONTACT INFORMATION:

Steve Heuchert, Associate Director
Planning and Permits
Steve.Heuchert@trca.ca



Toronto and Region
Conservation
Authority