

Port Union Waterfront Park Shoreline Maintenance Project

Project Overview

Why is the project needed?

Over time, high lake levels and waves have damaged the shoreline at Port Union Waterfront Park. Construction is needed to repair the shoreline and protect the park and its users from flooding and erosion.

How was the repair approach decided?

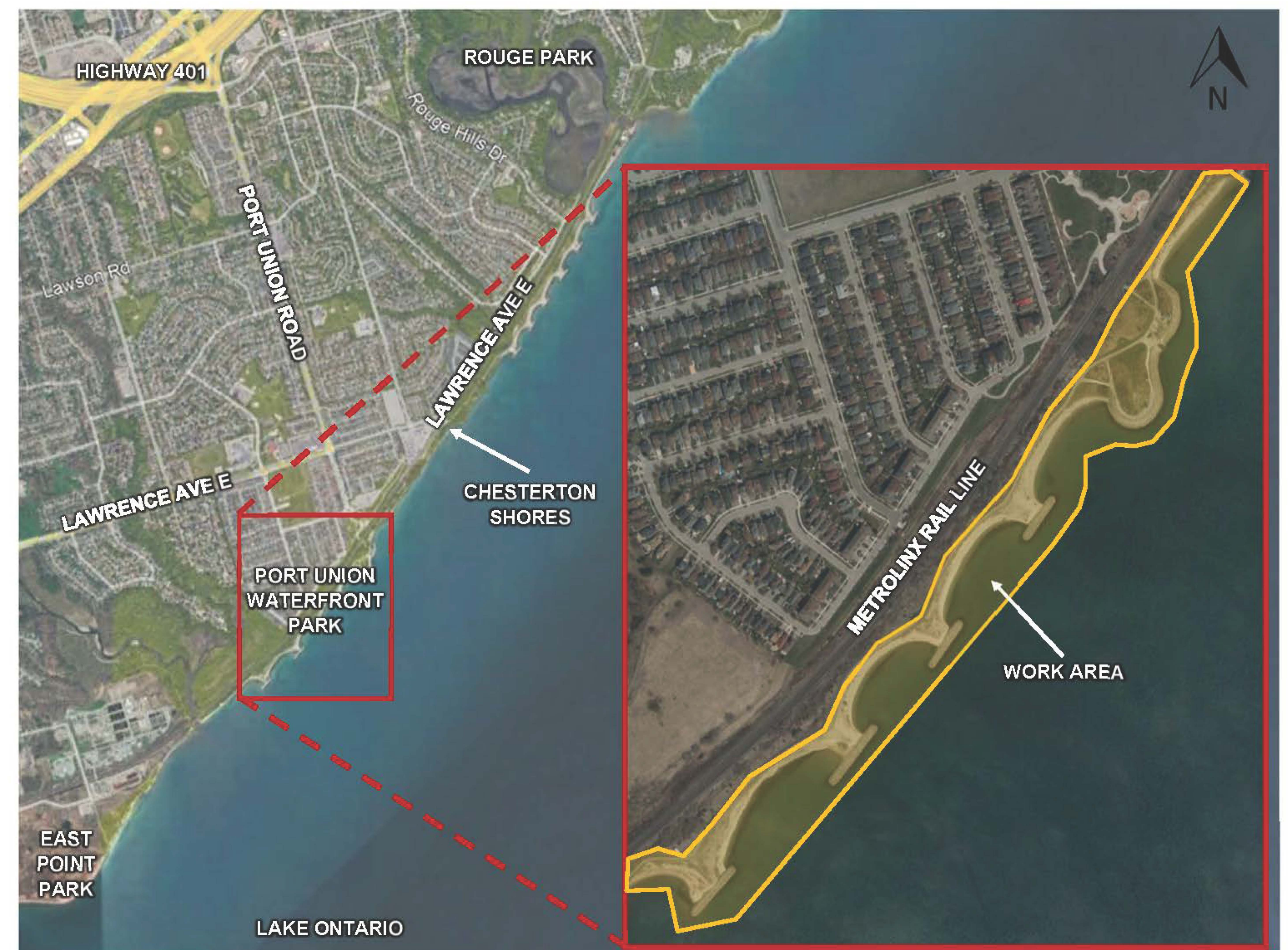
Coastal engineers assess wave action, water levels, and how the park is used to choose the right materials and shoreline design. A coastal assessment was completed for Port Union Waterfront Park in 2025 to determine an appropriate shoreline protection solution.

What is being done?

The work area is located along the shoreline of the park and includes the repair of five cobble shoreline. Work will include:

- Site Preparation: Installing fencing to provide a safe work area.
- Shoreline Repairs: Adding new cobble material of similar size to the existing material to renourish shoreline areas. Work will also include repairing land just behind the shoreline to protect the trail.
- Restoration: Restoring trails, reseeding and new tree plantings.

PROJECT AREA MAP



Port Union Waterfront Park Shoreline Maintenance Project

Shoreline Work

CURRENT CONDITIONS AND EROSION DAMAGE TO PARKLAND AND INFRASTRUCTURE

Wave action has caused damage to outfalls, the waterfront trail and areas of the park that create a safety risk for park users.



EXISTING STRUCTURES AND COBBLE SHORELINE



Port Union Waterfront Park Shoreline Maintenance Project

Shoreline Work

ADDITIONAL SHORELINE MATERIAL AREA



EXISTING COBBLE MATERIAL



The new cobble material being placed will be similar to the existing shoreline material. This allows the current shoreline use to be maintained.

Cobble material will be added to **five** shoreline areas to provide erosion protection.

Port Union Waterfront Park Shoreline Maintenance Project

Construction Information

PARK AND TRAIL IMPACTS DURING CONSTRUCTION



CONSTRUCTION DELIVERIES

- Stone deliveries will be completed by barge and stones will be offloaded on the headlands.
- No community roads or trails will be used for stone material delivery.
- The Port Union Village Common Park Waterfront Trail may be used for routine washroom and machine maintenance and refuelling.

PARK CLOSURES AND TRAIL USE

- The Waterfront Trail will remain open for the duration of the project, with minor delays for necessary trail crossings for construction vehicles.
- The minor delays are expected when machinery is moving stone material from the staging area to the Phase 2 work area.
- During these short closures, a team member will stop foot traffic and help guide trucks along the route to ensure safe crossings at these locations. The trail will always be open on evenings and weekends.
- Sections of the shoreline will remain closed for public safety during construction activities.
 - Phase 1 is currently planned for April to August and Phase 2 is currently planned for September to November.

Port Union Waterfront Park Shoreline Maintenance Project

Next Steps

As part of this project, TRCA is committed to protecting the natural environment and restoring the park for long-term health and community enjoyment.

DURING CONSTRUCTION: PROTECTING NATURE

To limit environmental impacts during construction, we will:

- Protect all possible trees and plants, and compensate for any necessary removals.
- Avoid disturbing nesting birds and fish during sensitive periods.
- Use erosion and sediment controls to protect water and soil.
- Regularly monitor the construction area for signs of wildlife.
- Work closely with City Urban Forestry and TRCA ecology experts.

AFTER CONSTRUCTION: RESTORING THE SITE

When work is finished, the area will be restored with:

- Native plants and seeds to support local wildlife.
- New trees planted both on- and off-site to replace necessary removals.
- Fish- and wildlife-friendly features like shoreline stones.

PROJECT TIMELINE



NEXT STEPS

- Obtain permits and finalize construction schedule.
- Construction notices with more information on park closures will be circulated and posted on site prior to the work starting.
- Project updates will be posted on the website as work progresses.



To stay informed about this project scan the QR code to visit <https://trca.ca/port-union-waterfront> or contact **Whitney Brennan**, Project Manager at: whitney.brennan@trca.ca