

TRCA'S FLOOD MONITORING WEBSITE

Guide

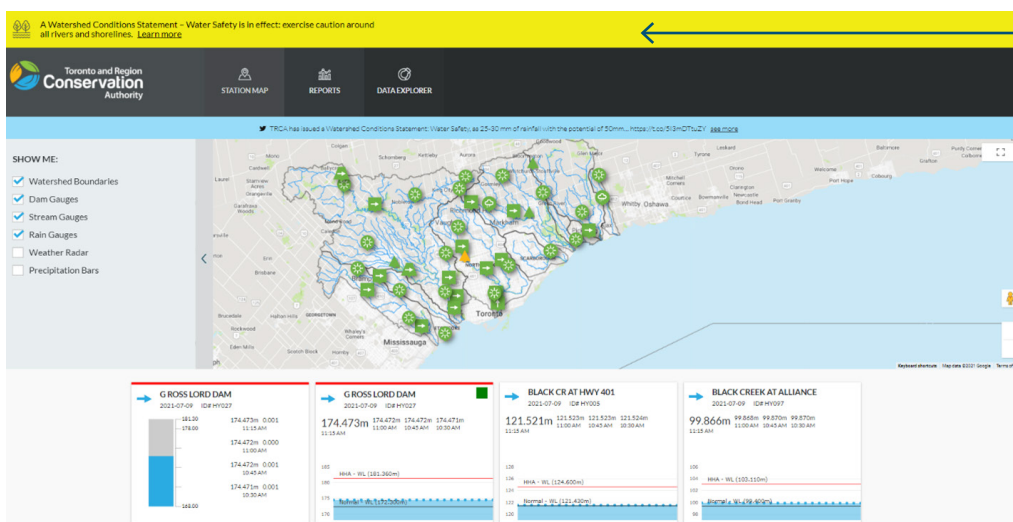
Explore the current conditions in your watershed

Toronto and Region Conservation Authority's (TRCA) principal mandate is to reduce the risk to life and damage to property caused by flooding. TRCA flood forecasting and warning program provides a vital service to municipal partners on the community level to notify, advise and provide technical advice/information, regarding flood risk.

TRCA's **Flood Forecasting and Warning Program** team monitor and assess forecasts and watershed conditions such as river and creek water levels, flows and rainfall amounts. This data is used to communicate the potential risk of flooding to the public, municipalities, and the media through the issuance of flood messages. For this reason, TRCA has an extensive **flood monitoring gauge network** of real-time stream and rain gauges to provide up-to-date and accurate data for the flood forecasting and warning program. The gauges have been strategically placed throughout the jurisdiction in locations in order to provide situational awareness for flood risk. The system consists of a series of specially designed stations capable of collecting and posting information in near real time on TRCA's flood monitoring website, [TRCAGauging.ca](https://trca.ca/gauging).

Features of the flood monitoring website

HOMEPAGE STATION MAP



An active flood message is shown here

For a demonstration of the TRCA gauging website, visit trca.ca/flood.

Subscribe to receive TRCA's flood messages at [TRCA.ca/get-flood-messages](https://trca.ca/get-flood-messages) and follow us on Twitter at @TRCA_Flood.

WEBSITE LEGEND

Shapes: Depict the type of monitoring station



Rain



Stream



Dam

Colour: Represent the current status of conditions



Normal



Alarm State
is monitored for
increasing trends



Not Reporting



Symbols: Denote the current trend



Stable River Levels



Rain



Increasing River Levels

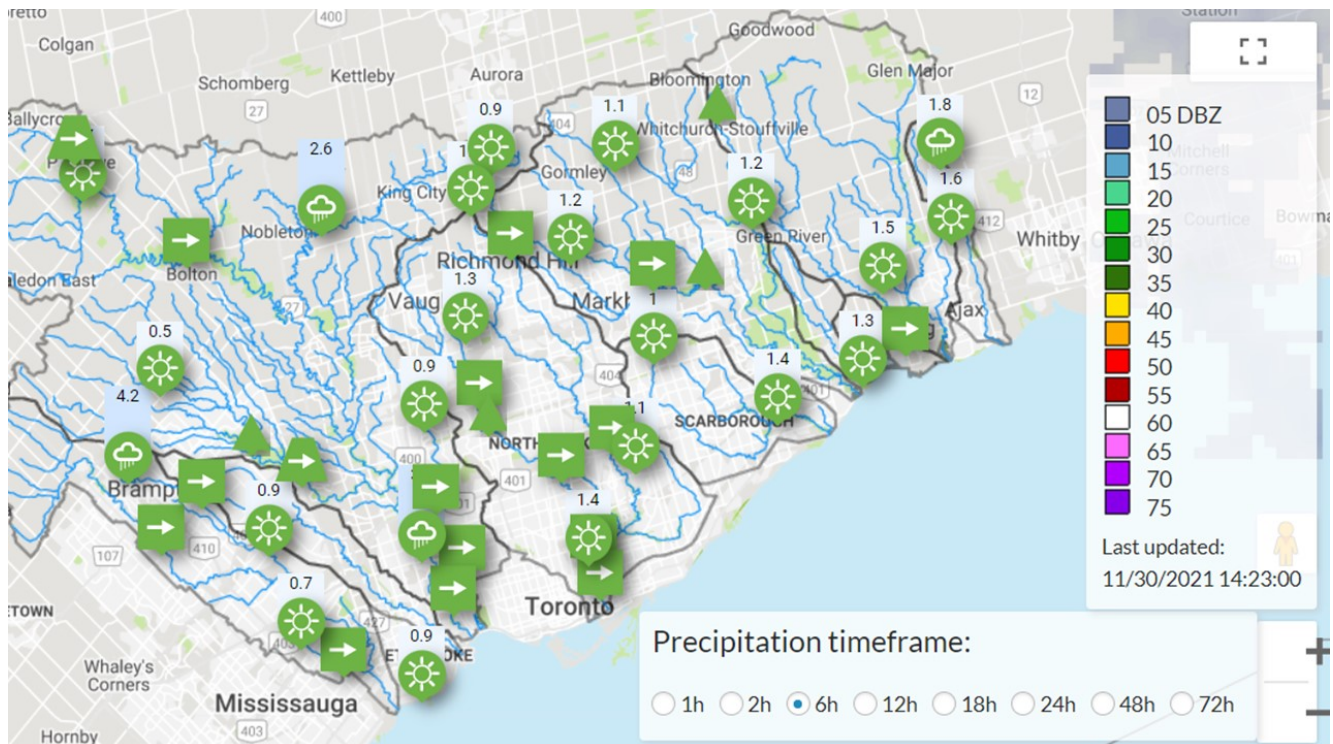


No Rain (within the last hour)



Decreasing River Levels

ADDITIONAL MAP LAYERS



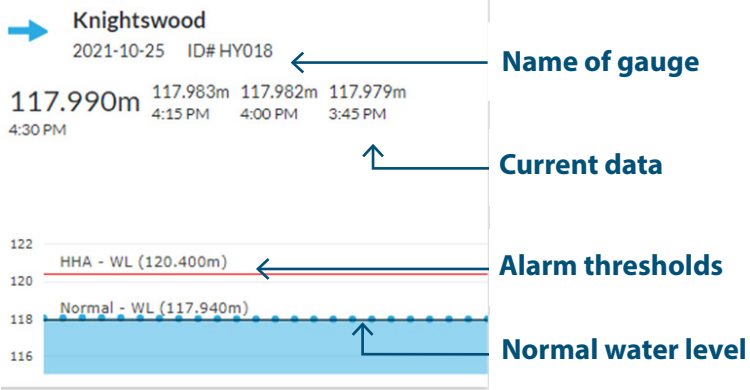
Additional map layers include weather radar from National Oceanic and Atmospheric Administration (NOAA), and precipitation bars that sum and display the rainfall amounts on the map above each station.

HOMEPAGE DATA CARDS

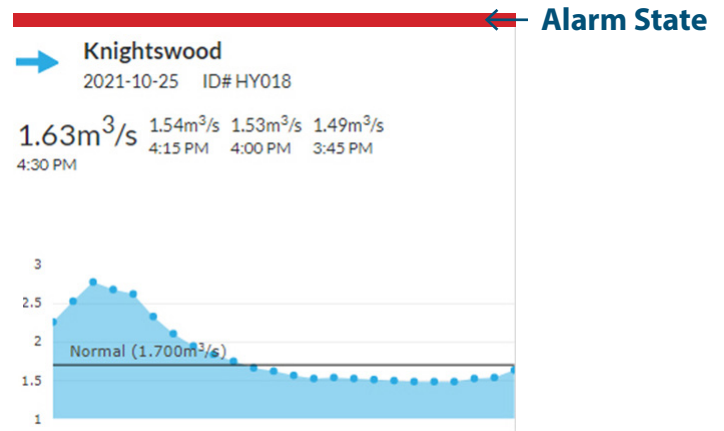
Data Cards are for at-a-glance gauge information based on the last 6 hours of data and are displayed below the station map.

There are different types of data cards depending on the data being collected at each station:

1. Water level and streamflow gauges

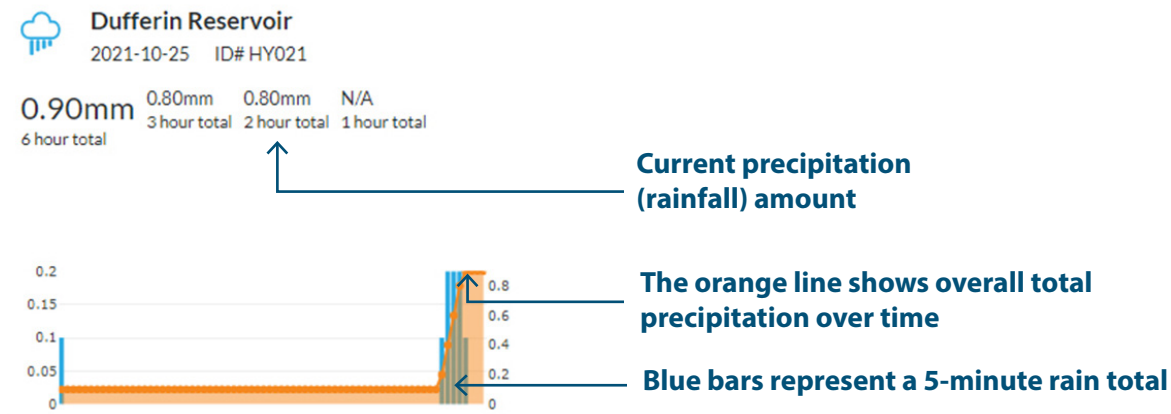


Example of a water level data card.



Example of a streamflow data card.

2. Precipitation gauges

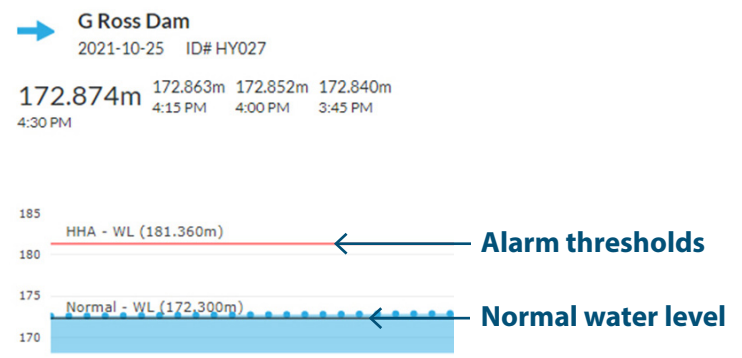


Example of a precipitation gauge widget card.

3. Dam gauges (WL & Reservoir)



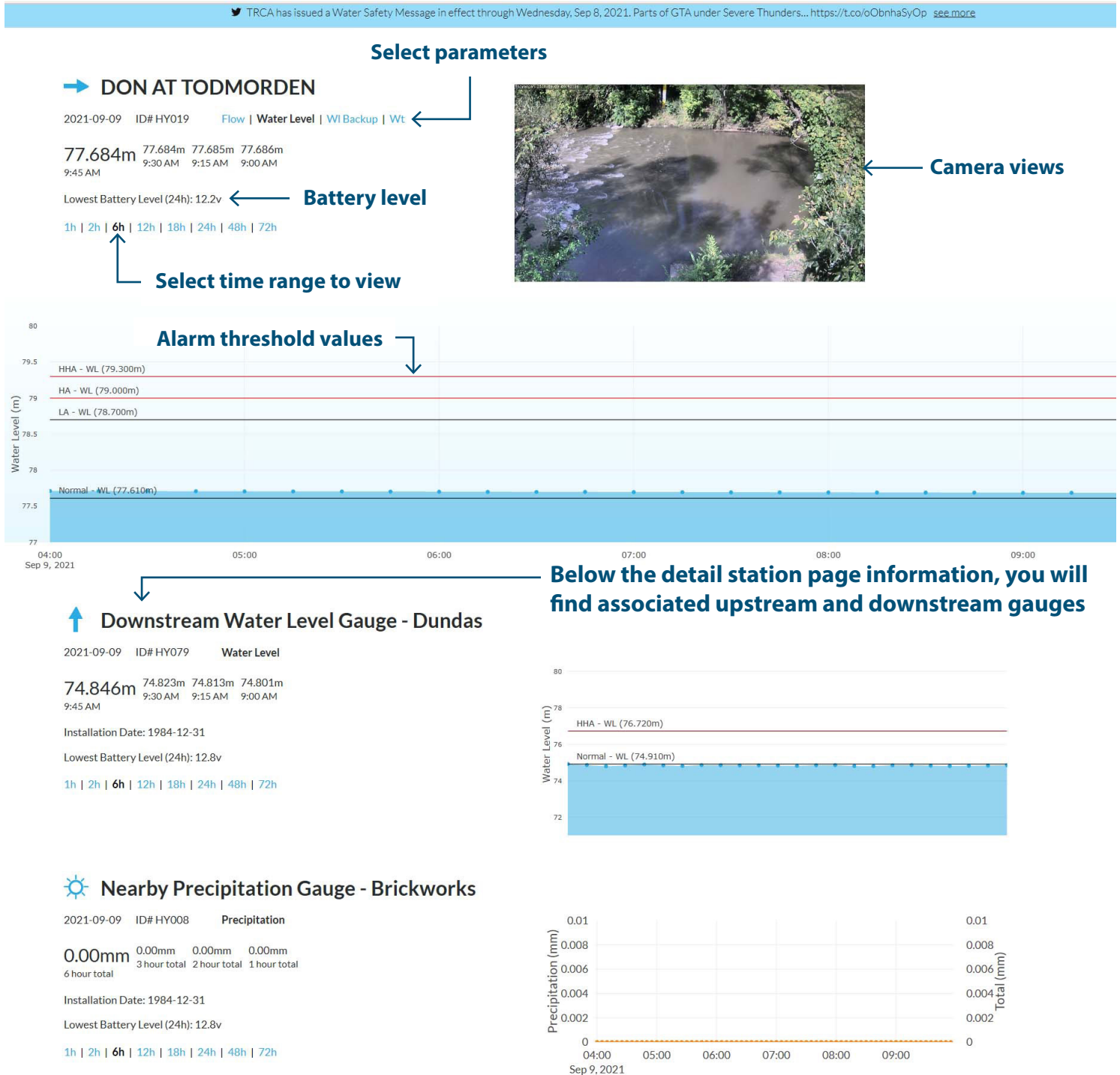
Example of a dam gauge widget card.



STATION PAGES

Station pages provide an expanded overview of the homepage data cards. One monitoring location (gauge) and the entirety of its data is displayed on the station pages. The station pages can be accessed by clicking on the station name on the map or data cards below the map.

Detailed Station Page





ADDITIONAL WEBSITE FEATURES:

Reports - Create your own custom chart report by selecting time range, stations and parameters.

Data Explorer - The data explorer tool is used to discover data beyond the real-time flood monitoring network. The data explorer can use sub-network filters, search bar and by map location.

Registration - Click the login link in the footer section of the website to register.

- **Dashboards** - Registered users can customize their own dashboard view with only what they want to see.
- **Data Downloads** - Registered users can download the data directly by using the “Download Tabular Data” links.

For a full demonstration of the TRCA Gauging website, visit the **How to Videos** at [TRCA.ca/flood/prepare](https://trca.ca/flood/prepare).

CONTACT US

To report a flooding incident from a watercourse, please leave a message on TRCA’s floodline at **416.661.6514**.
For website inquiries, contact **flood.message@trca.ca**.