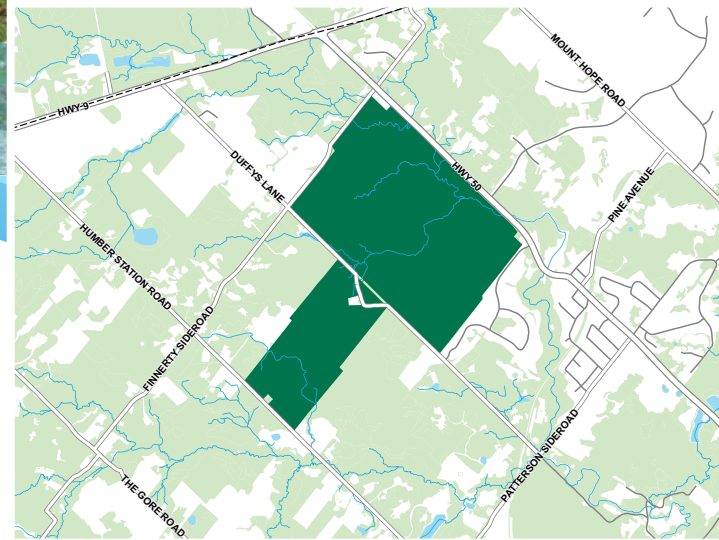


Palgrave Forest and Wildlife Area

CALEDON



Palgrave Forest and Wildlife Area is an important part of TRCA's network of protected greenspaces which help to ensure watershed health and environmental sustainability.

GENERAL INFORMATION

- Palgrave Forest and Wildlife Area (PFWA) is a 307 hectare-property owned and managed by Toronto and Region Conservation Authority (TRCA) located along the upper branch of the Main Humber River subwatershed in the Town of Caledon, Region of Peel.
- The land occupied by PFWA is subject to several provincial plans and policies, including the Oak Ridges Moraine Conservation Plan and the Greenbelt Plan.
- 22.3km of trail run through the property, including the Oak Ridges Trail, providing connections west to TRCA's Glen Haffy Conservation Park and the Bruce Trail, and east to the Caledon Trailway (co-designated as part of The Great Trail). The trail system within PFWA also includes a series of mountain biking and hiking trails.

ENVIRONMENTAL FEATURES

- PFWA supports a diversity of primarily forest vegetation communities, and flora and fauna species of regional concern. These are associated with high-quality forests and forested wetlands found at the site.
- Natural habitat within PFWA includes coniferous plantations, sandy meadows, mature sugar maple forests with small kettle wetlands, and ponds surrounded by coniferous swamp.
- Due to its ecological features and functions, PFWA is designated as part of the Simcoe-Albion Forest Environmentally Significant Area and as part of a Regionally Significant Area. Additionally, the entirety of PFWA is part of the Palgrave Moraine Earth Science Area of Natural and Scientific Interest.



Bird Watching



Cross Country Skiing



Cycling/Mountain Biking



Equestrian



Hiking

PLANNING DOCUMENTS

- Palgrave Forest and Wildlife Area Trail Plan (2007)



Toronto and Region
Conservation
Authority