



Claireville North Multi-use Trail Project Q&A Summary Sheet

March 15, 2021

Q: Why has there not been consultation since 2011 regarding the trail?

A: Please refer to page 15 of the PowerPoint presentation available on the Claireville Conservation Area website (trca.ca/claireville). The slide indicates City of Brampton and TRCA projects that provided opportunities for public input that directly or indirectly involved the proposed multi-use trail and/or the community trail connections associated with the Claireville North Multi-use Trail Project.

Q: How will the trail affect business near or adjacent to the trail?

A: TRCA is not anticipating any impact to businesses that currently operate within or adjacent to Claireville Conservation Area. In areas where the proposed multi-use trail runs adjacent to businesses that operate on leased land within Claireville Conservation Area, TRCA has already or is planning on installing fencing to separate uses.

Q: Will there be a trail connection to the West Humber Trail in Toronto and the Claireville Reservoir area?

A: TRCA is working to complete this trail connection. At this point, the multi-use trail system that runs through Claireville Conservation Area begins at the parking area at the bottom of Claireville Conservation Drive and connects to both to Highway 50 and Gorewood Drive.

Q: What is the timeline for a trail connection to the West Humber Trail?

A: TRCA staff anticipate initial planning work for this project to commence later in 2021. An implementation timeline for this project has not yet been formalized.

Q: How will the design address privacy adjacent to residential blocks?

A: The design of the Claireville North Multi-Use Trail addresses privacy concerns by, where possible, avoiding sections of multi-use trail parallel to residential properties. In addition, the placement of the trail largely maintains densely vegetated and forested areas adjacent to and behind residential areas.

Q: Is there going to be another pedestrian trail crossing at Queen Street?

A: The only proposed trail crossing at Queen Street passes underneath the Queen Street Bridge, parallel to the West Humber River. TRCA is not planning for any additional trail crossings at Queen Street.

Q: Why didn't TRCA install project signage at the beginning of the project planning in 2011?

A: TRCA installs project information signage when construction phasing and access activities are imminent.

Q: Will motorized vehicles or transit vehicles be using the trail?

A: Motorized vehicles will not be permitted on the trail, with exception of pre-authorized maintenance and management activities.

Q: Will there be an active transportation connection to the proposed trail along Goreway Drive?

A: The City of Brampton is no longer considering active transportation facilities along Goreway Drive. TRCA and City staff are working to investigate and plan for future trail connectivity north-west of the proposed Goreway Drive parking area.

Q: Will the trail be accessible for mobility device users?

A: Yes. Most of the multi-use trail in the valley will be fully accessible for all trail users. An accessible community trail connection between the valley and Valleyside Trail will be constructed to provide safe access that meets both the technical requirements of the *Accessibility for Ontarians with Disabilities Act (AODA)* and the requirements for recreational trails listed in the *City of Brampton's Accessibility Technical Standards*.

Q: Will any more trees be removed in 2022?

A: Additional trees are required to be removed to complete the trail system. This will take place after the migratory bird and bat window closes in the fall. Following these removals, no additional trees are planned to be removed because of this trail project.

Q: Why is TRCA adding another parking lot off Goreway Drive?

A: After extensive public consultation in 2011, TRCA determined that an additional parking lot would offset parking capacity issues at the existing parking areas, as well as to prevent visitors from outside the local community from parking in local neighbourhoods to access the trail system.

Q: Is there a plan to connect this trail to the Stephen Llewelyn Trail?

A: Yes. TRCA and City staff will be working together to investigate and plan for future trail connectivity north-west of the proposed Goreway Drive parking lot.

Q: Was a loop trail design considered as part of this work?

A: A loop trail was not considered as part of this initiative, as per the direction provided in the *Claireville Conservation Area Management Plan Update (2011)*. Improved connectivity to existing trail loops within Claireville Conservation Area will be realized when the multi-use trail project is completed. TRCA is improving the looped trail network in Claireville Conservation Area between Queen Street and Steeles Avenue West.

Q: Why were other vistas not considered for trail connection points?

A: Connectivity to certain vista blocks is not possible due to environmental constraints such as steep grades or the prevalence of forested areas. Vista blocks were chosen by investigating where people were already entering Claireville Conservation Area as well as considering where maintenance vehicles could safely access the property.

Q: What strategies encourage people to use the trail rather than creating their own?

A: By creating a formalized trail, we promote visitors staying on the trail and thereby also limit disruption to the surrounding environment. Wayfinding sign improvements will also help people better navigate Claireville Conservation Area.

Q: Why is the trail three metres wide?

A: The Claireville North Multi-Use Trail is three metres wide to permit multi-directional travel, to ensure people can safely pass slower trail users and to accommodate maintenance vehicle use along the trail.

Q: Is there a plan to have an off-leash dog area in Claireville CA?

A: The *Claireville Conservation Area Management Plan Update (2011)* identified “the possibility for a leash-free area at [...] CCA [...]” but there has been insufficient support from the local dog-walking community and the City of Brampton to establish such an area. TRCA is open to further investigation if the City and/or other group(s) are interested in committing to its ongoing maintenance.

Q: How will the interface between the trail and the McVean Farm be managed? Will additional parking be made available?

A: TRCA will be installing fencing in areas where the multi-use trail passes near the McVean Farm area. Additional parking in the vicinity of the McVean Farm is not part of the scope of work for the Claireville North Multi-use Trail Project.

Q: Will TRCA staff be monitoring trail use and impacts once the trail is open?

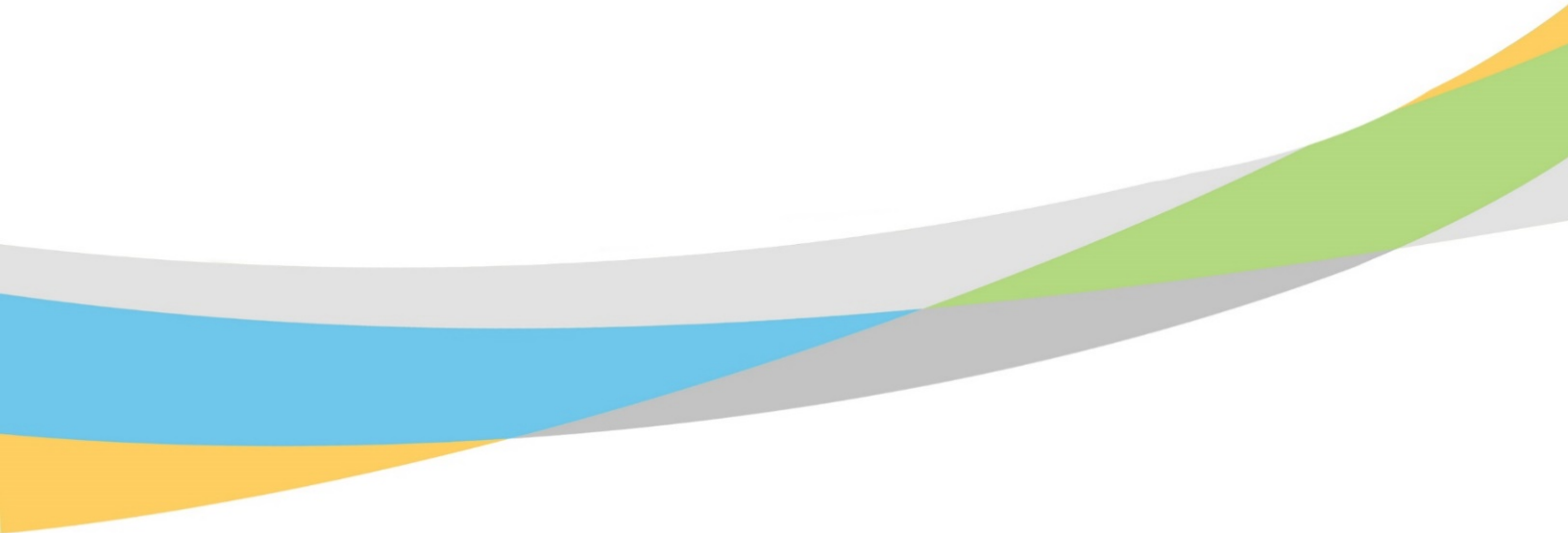
A: The City of Brampton will be responsible for all trail monitoring and maintenance activities once the trail is opened.

Q: Will there be navigational signage on the trail?

A: Yes. TRCA will be installing maps at trailheads and parking areas and installing post markers along the trail.

Q: Will the new parking lot be paved?

A: TRCA is considering paving the Goreway Drive parking lot; staff are currently evaluating construction and maintenance requirements for different surface types.



www.trca.ca

