

Patterson Creek Sanitary Infrastructure Protection Project Site I-064, Site I-065 & Site P-102 (YOR-005)

Sites I-064 and I-065, as well as Site P-102, are located along Patterson Creek, just south of Carrville Road, in the Town of Richmond Hill (**Figure 1**). A 2014 geomorphic assessment confirmed all three sites as high priority risks for sanitary infrastructure exposure. The recommended solution consisted of a “repair-in-place” strategy for Site I-064/I-065 utilizing channel widening and the installation of grade control riffle structures. A minor channel realignment was proposed for Site P-102 in order to shift the channel away from the sanitary maintenance hole. Infrastructure protection works at Site P-102 began in July 2017; remedial works at Site I-065 commenced shortly after works were completed at Site P-102. Remedial works at Site I-064 commenced following Site I-065 and were completed in November 2017 (**Figure 4, 3 and 4**).

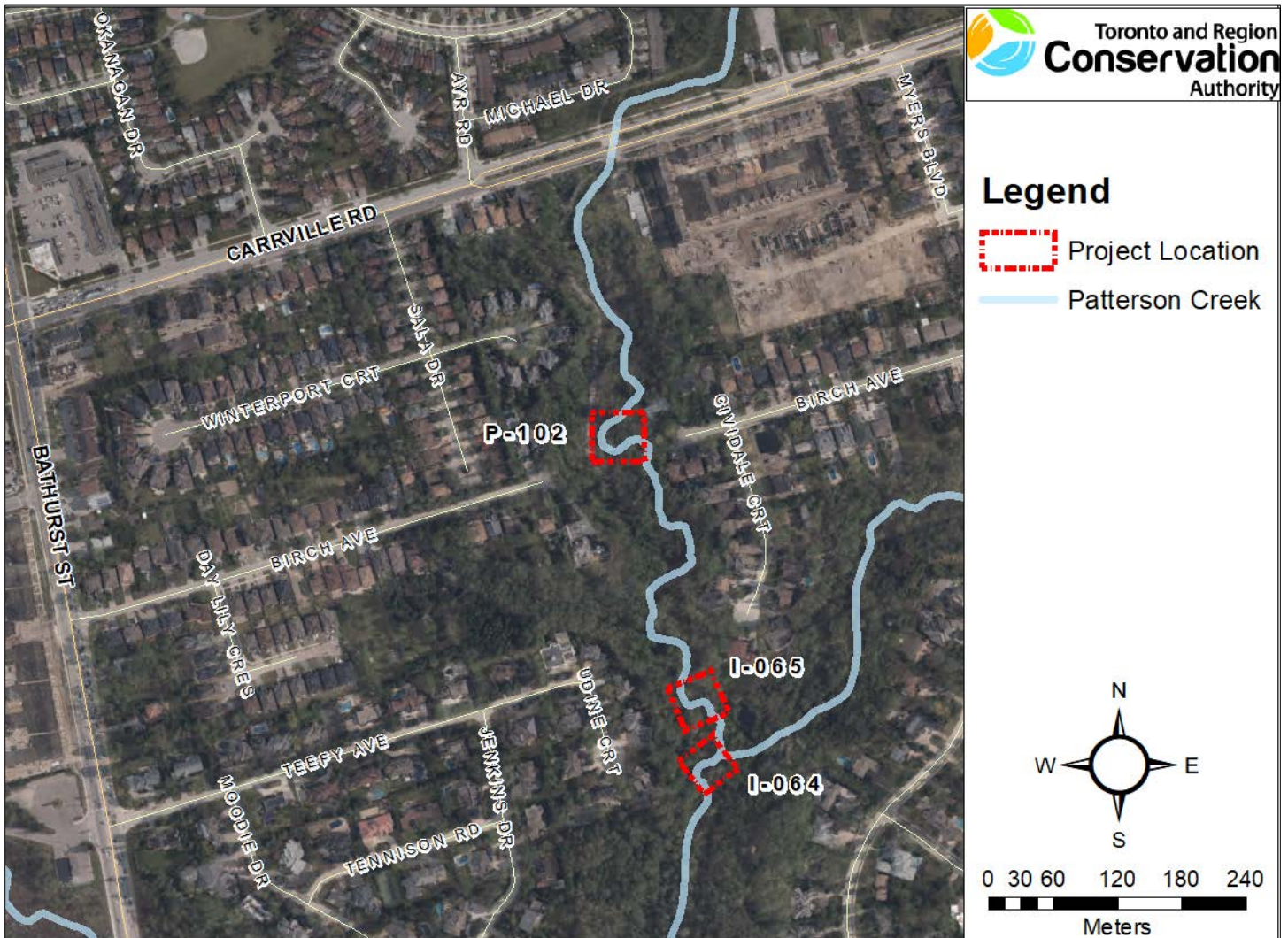


Figure 1. Site P-102, Site I-065 & Site I-064 project locations. *Source: TRCA, 2018.*



Figure 2. Slight creek realignment and stone revetment at Site P-102. *Source: TRCA, 2018.*



Figure 3. Stone riffle and buttress treatment at Site I-065. *Source: TRCA, 2018.*



Figure 4. Stone riffle and buttress treatment at Site I-064. *Source: TRCA, 2018.*