

GERMAN MILLS SETTLERS PARK SANITARY INFRASTRUCTURE PROTECTION PROJECT - SITE I-152, P-060 & P-068 (YOR-006)

The German Mills Settlers Park Sanitary Protection Project is located along an estimated 300 metre stretch of German Mills Creek, a part of the Don River watershed. The project area is within municipally owned property known as German Mills Settlers Park, situated west of Don Mills Road between John Street and Steeles Avenue East, in the City of Markham (**Figure 1**). The Regional Municipality of York's 750 mm diameter sanitary line and the City of Markham's public trail run parallel to the east bank of the watercourse from John Street to the southern limits of the park. The sanitary line crosses or is in close proximity to the watercourse at Site I-152, Site P-060 and Site P-068. TRCA conducted an Environmental Impact Statement study in 2017 and initiated a Schedule B Municipal Class Environmental Assessment planning process in 2018 to determine the preferred alternative for sanitary infrastructure protection works.

For more information, please refer to the [German Mills Settler Park Sanitary Infrastructure Protection Project website](#).

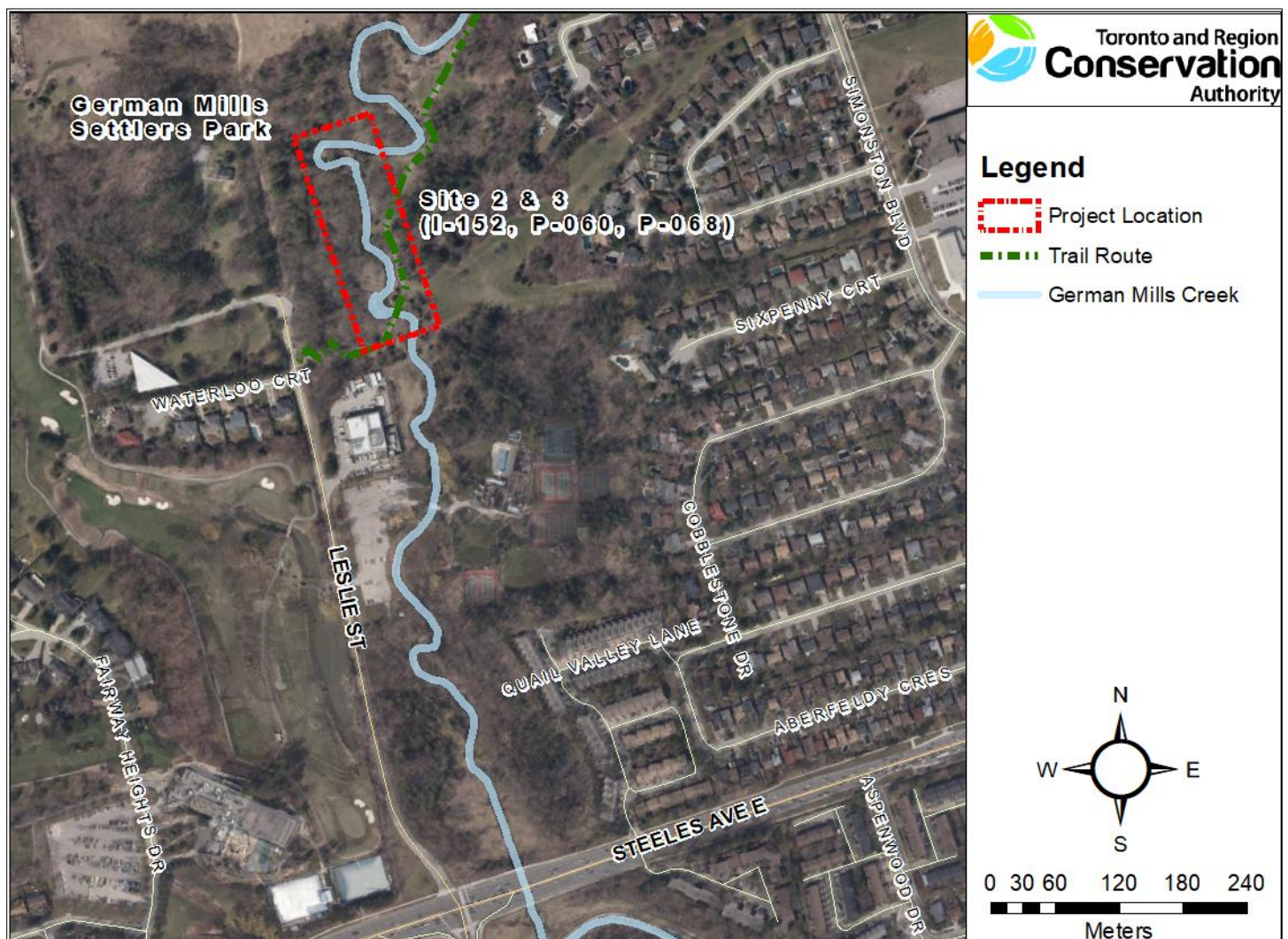


Figure 1. Site I-152/Site P-060 (Site 2) & Site P-068 (Site 3) project locations. *Source: TRCA, 2018.*



Figure 2. Site I-152 in May 2018. *Source: TRCA, 2018.*



Figure 3. Current conditions at Site P-060. *Source: TRCA, 2018.*



Figure 4. Current conditions at Site P-068. *Source: TRCA, 2018.*