

EXISTING CONDITIONS : WEST SEGMENT



FISH AND WILDLIFE

A variety of fish and wildlife species have been recorded during TRCA surveys. A sample of species is listed below.

Wildlife

39 species recorded during surveys including: *Bank Swallow*, *American Mink* and *Common Snapping Turtle*.

Fish

46 species recorded during surveys including: *Northern Pike*, *Pumpkinseed*, *Rock Bass* and *Yellow Perch*.



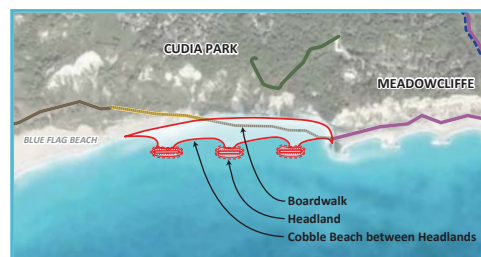
Photo Credit: USFWS

Did You Know:

- Bluffer's Park was constructed in the 1970's. It led to the build-up of the existing sand beach.
- Bank Swallows use the Bluffs across the entire Segment.
- Wood Thrush and Chimney Swift (species at risk) have been observed in this Segment.



ALTERNATIVE 1 - Headland-Beach



Description:

- Headland-beach system, boardwalk over cobble beach.
- Dimensions (approximate):
 - Boardwalk: 4 to 5 m wide and 650 m long

ALTERNATIVE 2A - Bridge (short span)



Description:

- Bridge connection with short spans.
- Dimensions (approximate):
 - 3 m wide with 30 m spans
 - 600 m long

ALTERNATIVE 2B - Bridge (long span)



Description:

- Bridge connection with long spans.
- Dimensions (approximate):
 - 3 m wide with 100 m spans
 - 600 m long

All West Segment Alternatives

- Provide safe public access between Bluffer's Park and Meadowcliffe (except Do Nothing).
- Retain existing Blue Flag Beach.
- Improve access along Brimley Road (except Do Nothing).
- Habitat enhancements (except Do Nothing).

OBJECTIVES	EVALUATION		
Natural Heritage	Most Preferred	Preferred	Intermediate Preferred
Risk	Most Preferred	Intermediate Preferred	Intermediate Preferred
Experience	Preferred	Intermediate Preferred	Intermediate Preferred
Coordination	Most Preferred	Preferred	Intermediate Preferred
Cost	Preferred	Intermediate Preferred	Least Preferred

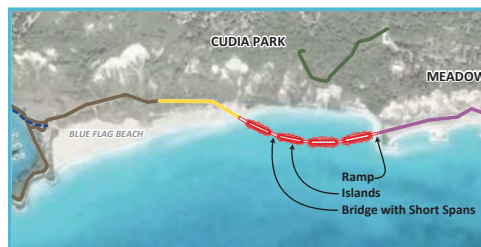
OVERALL	MOST PREFERRED	INTERMEDIATE PREFERRED	INTERMEDIATE PREFERRED
	<ul style="list-style-type: none"> • Greatest improvements to terrestrial and aquatic habitat. • Smallest loss of tableland from erosion. • Addresses risks to public safety. • Greatest change to existing character of sand beach. • Provides inclusive, continuous public access along waterfront. • Provides Emergency Services access along full length of waterfront. 	<ul style="list-style-type: none"> • Small amount of high quality aquatic habitat improvements. • Largest loss of tablelands from erosion. • Addresses risks to public safety. • Minor changes to existing character of sand beach. • Provides continuous public access along waterfront, for most users. • No additional Emergency Services access. 	<ul style="list-style-type: none"> • Small amount of high quality aquatic habitat improvements. • Largest loss of tablelands from erosion. • Addresses risks to public safety. • Minor changes to existing character of sand beach. • Provides continuous public access along waterfront, for most users. • No additional Emergency Services access.



All West Segment Alternatives

- Provide safe public access between Bluffer's Park and Meadowcliffe (except Do Nothing).
- Retain existing Blue Flag Beach.
- Improve access along Brimley Road (except Do Nothing).
- Habitat enhancements (except Do Nothing).

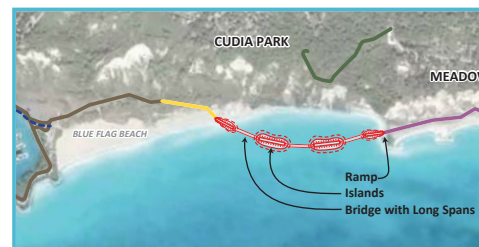
ALTERNATIVE 3A - Island-Bridge (short spans)



Description:

- 5 to 6 islands linked by bridges.
- Dimensions (approximate):
 - Islands: 50 to 100 m long
 - Bridges: 3 m wide and 30 m long

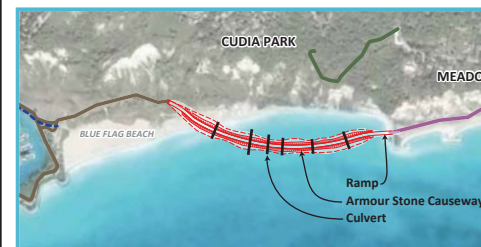
ALTERNATIVE 3B - Island-Bridge (long spans)



Description:

- 3 islands linked by bridges.
- Dimensions (approximate):
 - Islands: 120 m long
 - Bridges: 3m wide and 100 m long

ALTERNATIVE 4 - Causeway



Description:

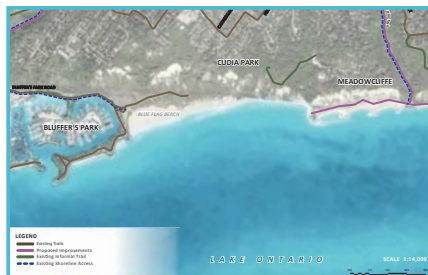
- Armourstone-protected causeway crossing.
- Dimensions (approximate):
 - 30 m wide and 650 m long

OBJECTIVES	EVALUATION		
Natural Heritage	Least Preferred	Intermediate Preferred	Least Preferred
Risk	Intermediate Preferred	Intermediate Preferred	Most Preferred
Experience	Intermediate Preferred	Intermediate Preferred	Least Preferred
Coordination	Least Preferred	Intermediate Preferred	Least Preferred
Cost	Preferred	Intermediate Preferred	Preferred

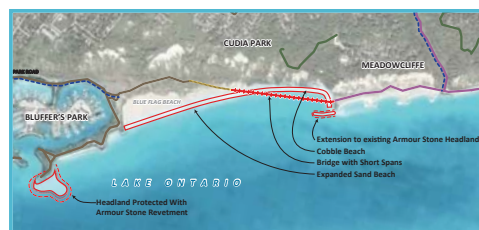
OVERALL	LEAST PREFERRED	INTERMEDIATE PREFERRED	LEAST PREFERRED
	<ul style="list-style-type: none"> • Embayment habitat that would be created, not suitable for open coast. • Moderate loss of tablelands from erosion. • Addresses risk to public safety. • Minor changes to existing character of sand beach. • Provides continuous public access along waterfront, for most users. • No additional Emergency Services access. 	<ul style="list-style-type: none"> • Moderate improvements to terrestrial and aquatic habitat. • Largest loss of tablelands from erosion. • Addresses risk to public safety. • Minor changes to existing character of sand beach. • Provides continuous public access along waterfront, for most users. • No additional Emergency Services access. 	<ul style="list-style-type: none"> • Embayment habitat that would be created, not suitable for open coast. • Moderate loss of tablelands from erosion. • Addresses risk to public safety. • Greatest change to existing character of sand beach. • Results in less direct access to the water. • Provides inclusive, continuous public access along waterfront. • Provides Emergency Services access along full length of waterfront.

WEST SEGMENT

ALTERNATIVES



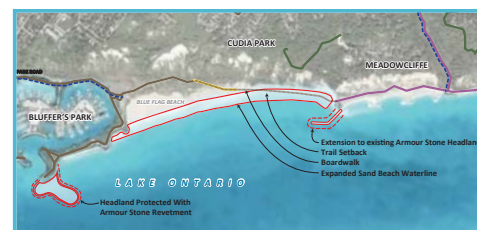
ALTERNATIVE 5A Beach Expansion (narrow)



Description:

- Headland expansion at Meadowcliffe and Bluffer's Park.
- Expanded sand beach.
- Bridge connection to Meadowcliffe.
- Dimensions (approximate):
 - Beach expansion: 30 m into Lake Ontario
 - Headlands: 130 m (Bluffer's Park) and 100 m into the lake
 - Bridge: 3 m wide, 30 m spans and 600 m long

ALTERNATIVE 5B - Beach Expansion (wide)



Description:

- Headland expansion at Meadowcliffe and Bluffer's Park.
- Expanded sand beach.
- Bridge connection to Meadowcliffe.
- Dimensions (approximate):
 - Beach expansion: 60 m into Lake Ontario
 - Headlands: 230 m (Bluffer's Park) and 200 m into the lake
 - Boardwalk: 4 - 5 m wide and 650 m long

DO NOTHING - Existing Conditions



Description:

- No safe public access between Bluffer's Park and Meadowcliffe provided.
- No changes to Waterfront Trail Route, some portions on shared roadways.
- Existing maintenance ongoing.

OBJECTIVES	EVALUATION		
Natural Heritage	Most Preferred	Most Preferred	Intermediate Preferred
Risk	Preferred	Most Preferred	Least Preferred
Experience	Preferred	Most Preferred	Least Preferred
Coordination	Most Preferred	Most Preferred	Least Preferred
Cost	Least Preferred	Intermediate Preferred	Most Preferred

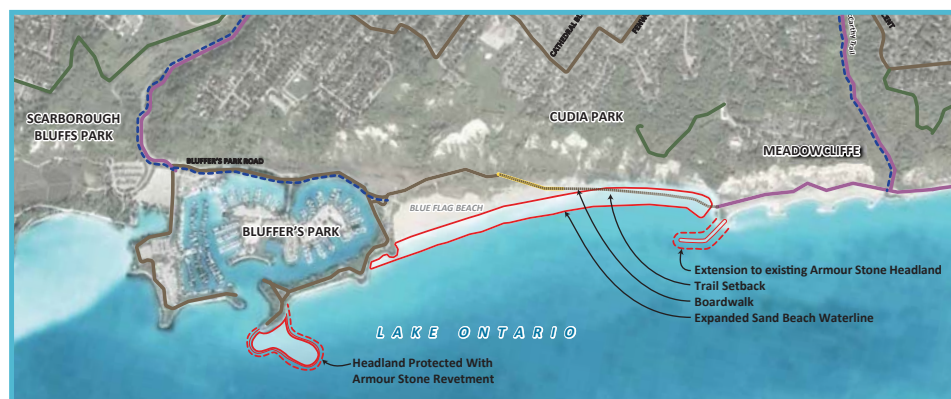
OVERALL	PREFERRED	MOST PREFERRED	INTERMEDIATE PREFERRED
	<ul style="list-style-type: none"> • Greatest improvements to terrestrial and aquatic habitat. • Smallest loss of tableland from erosion. • Addresses risk to public safety. • Expands sand beach capacity. • Provides continuous public access along waterfront, for most users. • Provides additional Emergency Services access along waterfront. 	<ul style="list-style-type: none"> • Greatest improvements to terrestrial and aquatic habitat. • Smallest loss of tablelands from erosion. • Minimizes risk to public safety. • Greater expansion of sand beach capacity. • Provides inclusive, continuous public access along waterfront. • Provides additional Emergency Services access along waterfront. 	<ul style="list-style-type: none"> • No improvements to terrestrial and aquatic habitat. • Largest loss tablelands from erosion. • Does not address risk to public safety. • Maintains existing character of sand beach. • Does not provide inclusive, continuous public access along waterfront.

WEST SEGMENT

EVALUATION

OBJECTIVE	Alternative 1 - Headland- Beach	Alternative 2A – Bridge (Short Span)	Alternative 2B – Bridge (Long Span)	Alternative 3A - Island- Bridge (Short Span)	Alternative 3B - Island- Bridge (Long Span)	Alternative 4 - Causeway	Alternative 5A – Beach Expansion (Narrow)	Alternative 5B – Beach Expansion (Wide)	Do Nothing
Natural Environment	MP	P	IP	LP	IP	LP	MP	MP	IP
Risk	MP	IP	IP	IP	IP	MP	P	MP	LP
Experience	P	IP	IP	IP	IP	LP	P	MP	LP
Coordination	MP	P	IP	LP	IP	LP	MP	MP	LP
Cost	P	IP	LP	P	IP	P	LP	IP	MP

OVERALL	Most Preferred	Intermediate Preferred	Intermediate Preferred	Least Preferred	Intermediate Preferred	Least Preferred	Preferred	Most Preferred	Intermediate Preferred
---------	----------------	------------------------	------------------------	-----------------	------------------------	-----------------	-----------	----------------	------------------------



Alternative 1 - Headland-Beach and Alternative 5B

- Beach Expansion (Wide) were both evaluated as Most Preferred.

Alternative 5B - Beach Expansion (Wide) has been selected as the Preliminary Preferred Segment Alternative as it will provide a more enjoyable waterfront experience.

LEGEND:

LP = Least Preferred	P = Preferred
IP = Intermediate Preferred	MP = Most Preferred

Alternative 5B - Beach Expansion (Wide)

NATURAL ENVIRONMENT:

- Greatest improvements to terrestrial and aquatic habitat.

RISK:

- Minimizes risks and provides safe public access.
- Improves access for emergency services.

EXPERIENCE:

- Provides full access for all to expanded sand beach.
- 250 m of shoreline added to public ownership.

COORDINATION:

- Most compatible with applicable plans and initiatives, and existing land use.

COST:

- Higher to construct.
- Lower to maintain (long term).

